



**Western Cape
Government**

AGRISTATS

A set of tools to enable improved agricultural decision-making

Eisenburg

RJ Nowers

10 November 2020

Brief description of Innovation/Technology

AgriStats

Summary of regional datasets emanating from Departmental Flyover project

- Datasets made available in Excel down to local municipal level
 - Various **Agritourism** categories
 - Accommodation, 4x4 Routes, etc
 - **Crops**
 - Area under each crop in hectares per local municipality
 - **Infrastructure**
 - Dairies, tunnels, netting, etc
 - **Livestock**
 - Numbers per livestock category (sheep, cattle, pigs, etc)

Brief description of Innovation/Technology

Available databases

Examples of datasets available

- Datasets made available in Excel down to local municipal level
 - ***Agricultural land prices***
 - Three land sizes per municipal area
 - Available for each provinces
 - ***Game species price data***
 - Average & highest prices for each species
 - ***Livestock breed price data***
 - Broken down to categories of each breed – cattle, goats, sheep
 - ***Festival database*** facilitating regional development
 - Festivals per towns per month of occurrence

Why was this innovation/technology needed/developed?

Data was sourced and are managed to research structural changes

- Structural changes in agriculture
 - Disasters, new technologies and prices changes stimulate changes in agriculture
 - Flyover project captures real data every view years to compare with baseline data
 - View growth of on-farm production & infrastructure over time
 - Allows for improved planning and decision-making with eye on future
 - Livestock breed data
 - Valuable for farmers & commodity groups to determine possible trends
 - Makes planning for auctions & budgets easier
 - Game species price data
 - Calculations of investment
 - Makes planning for auctions & budgets easier
 - Regional festival data
 - Towns view monthly flow of attractions – facilitate regional development planning

New and novel aspects to the innovation/technology

Database development

● Agricultural land prices

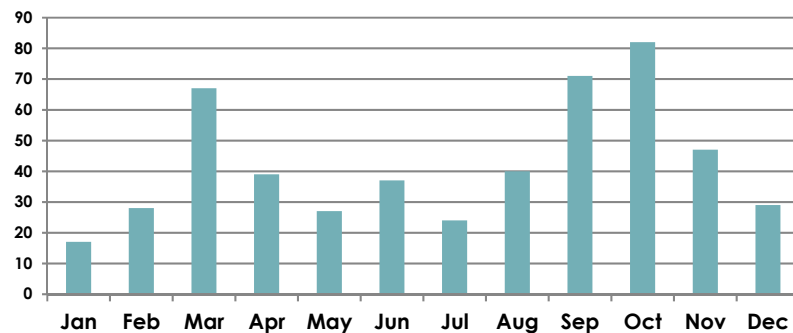
- Per local municipality

- Intensive farming areas: 0-20ha; 21-50ha & >50 ha also 0-50ha; 51-300ha & >300ha
- Extensive farming areas: 0-100ha; 101-1000ha & >1000 ha
- Western Cape: data available from 2003

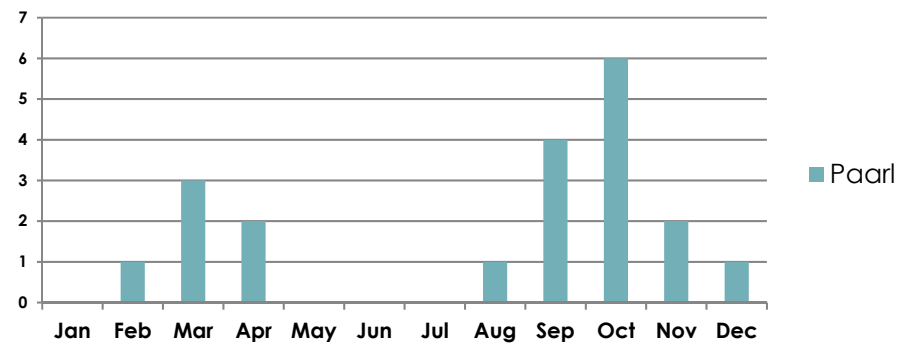
● Festival monitoring as regional development tool (498)

- Monthly flow of festivals determines visitation per area

Monthly flow of festivals (Western Cape)



Monthly occurrence of festivals (Paarl)



Significant wins/impact

Accurate recording of demand for data is kept

● Agricultural land prices

- Used by farmers/consultants to plan farm sales
- Used by National Department of Agriculture, Land Reform & Rural Development in project planning
- Utilised in business plan development

● Festival monitoring as regional development tool

- Municipal town planners use as tool to plan for expansion
- Local tourism specialists use for determining periods of low/high tourist visitation
- Local businesses plan accordingly their purchases

● Commodity/breed price databases

- Farmers, agribusinesses, academics, economists

Links to website/reading/references etc.

● Visit Website

- <https://www.elsenburg.com/gis/apps/agristats/>

● Contact *Riaan Nowers*

- Riaann@elsenburg.com
- 0836499302

Thank you

Contact Us



Western Cape
Government

BETTER TOGETHER.

Riaan Nowers

Manager: Agricultural Statistics

Tel: +27 (0)21 808 5194 **Fax:**

riaann@elsenburg.com

www.westerncape.gov.za