



Western Cape
Government

Agriculture

FOR YOU



Agricultural Integrated Management System (AIMS)

WHAT IS AIMS?



AIMS is a workflow based system with different data input and capture methods, a strong spatial component that aims to improve the department's decision making through business intelligence and informs it's strategies to deliver improved and quality services.

KEY OBJECTIVES ARE TO:

- Improve service delivery through seamless workflow processes
- Improve project management and monitoring
- Facilitate producer farmer register (census data)
- Improve commodity production areas and yield data
- Enhance spatial data storage and dissemination

HOW DOES IT WORK?

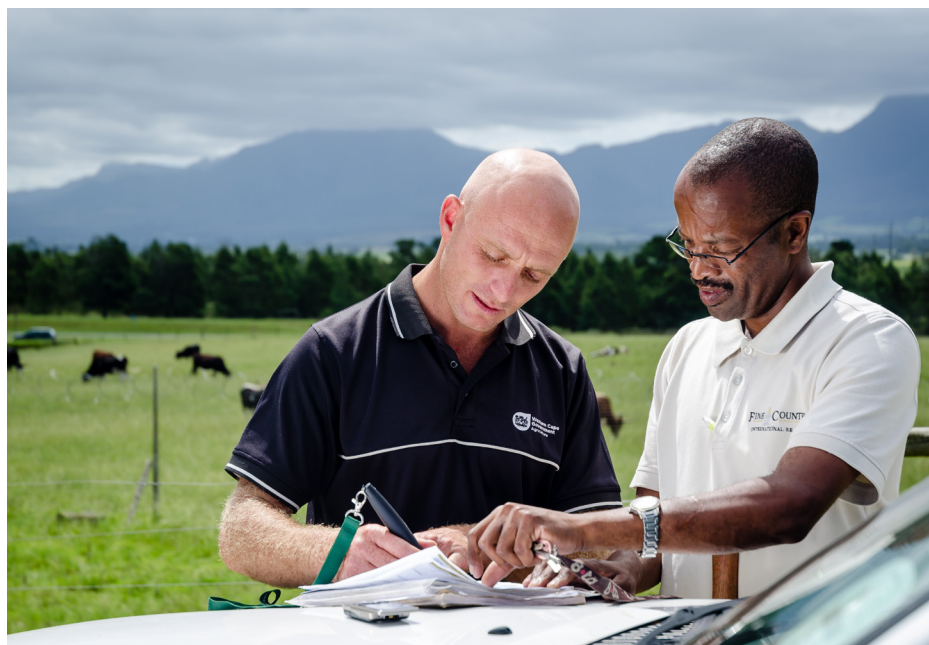
Data is collected via the digital pen or direct input; spatial data baseline; managed by defined workflows resulting in reports and analysis for dissemination.





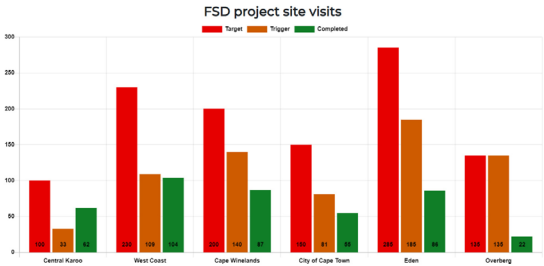
HOW DO WE MONITOR PERFORMANCE?

Extension Services capture farm data in real time with predefined protocols to ensure accurate on farm data is recorded.



GEOSPATIAL ANALYSIS, MAPPING AND BUSINESS INTELLIGENCE:

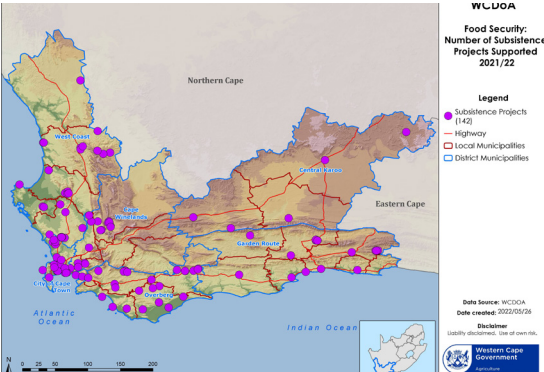
Data collected and baseline data is disseminated for reporting, analysis and spatial reporting and mapping.



Service delivery monitoring



Aggregated data down to municipal level



Food security projects spatial locations

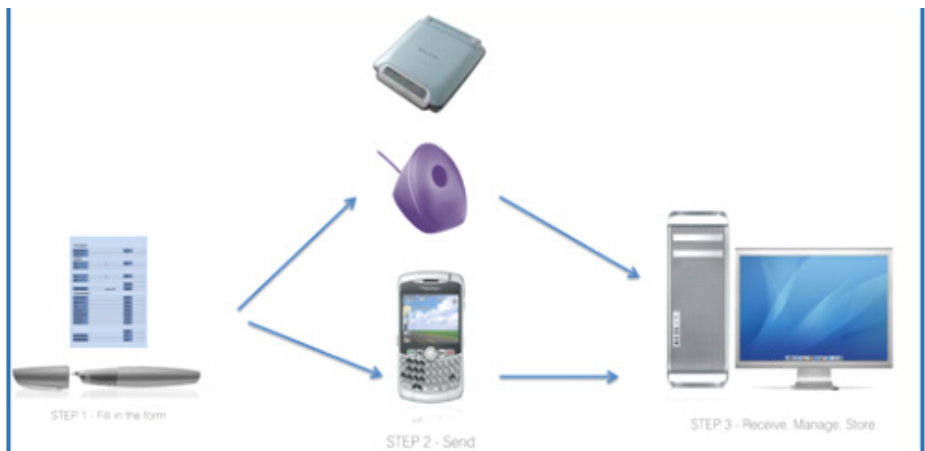
WHAT IS A SMARTPEN?

The Smartpen is a digital pen the works with normal paper that's been digitised with an image of a form that's traditionally been filled in manually (normal pen & paper).



HOW DOES IT WORK?

Data captured with the Smartpen is sent to a mobile device via bluetooth and from the mobile device via GPRS signal to a server.



WHAT ARE THE BENEFITS AND IMPACT?

- The geospatial mapping helps us better prioritise our resources and reach for more inclusive service delivery
- Data is received in real time, no more delays
- Data can never be lost, stored electronically
- Assurance that data is collected at farm level (GPS locked)
- Improved access to farm/project data
- Improved service delivery and responsiveness



FOR MORE INFO ON AIMS CONTACT:

Shaheed Martin

Tel: 021 808 7715

Email: shaheed.martin@westerncape.gov.za

Twitter: @WCGovAgri

www.elsenburg.com

www.westerncape.gov.za



Compiled by the Programme: Agricultural Producer Support and
Development, Western Cape Department of Agriculture

Muldersvlei Road, Elsenburg



**Western Cape
Government**