

19 June 2019

## Intense cold front to reach Western Cape on Friday 21<sup>st</sup> of June 2019

An intense cold front is expected to reach the country by Friday afternoon, resulting in adverse weather conditions for the Western Cape. Strong westerly to north-westerly winds (40 - 60 km/h) can be expected from the morning onwards over the entire Western Cape Province, ahead of the arrival of the cold front.

Moreover, gale force winds (60 - 75 km/h, gusting 80 - 100 km/h) can also be expected in places over the Central Karoo, Breede River Valley districts and Cape Peninsula. Gale force winds associated with the passage of the cold front are also anticipated on Friday (refer Figure 1) along the coast between Table Bay and Plettenberg Bay. These strong, gusty winds may result in damage to settlements and infrastructure, transport routes and travel services being affected by falling trees, blowing dust as well as strong crosswinds, which could lead to longer travel times, as well as closure of susceptible and key routes.

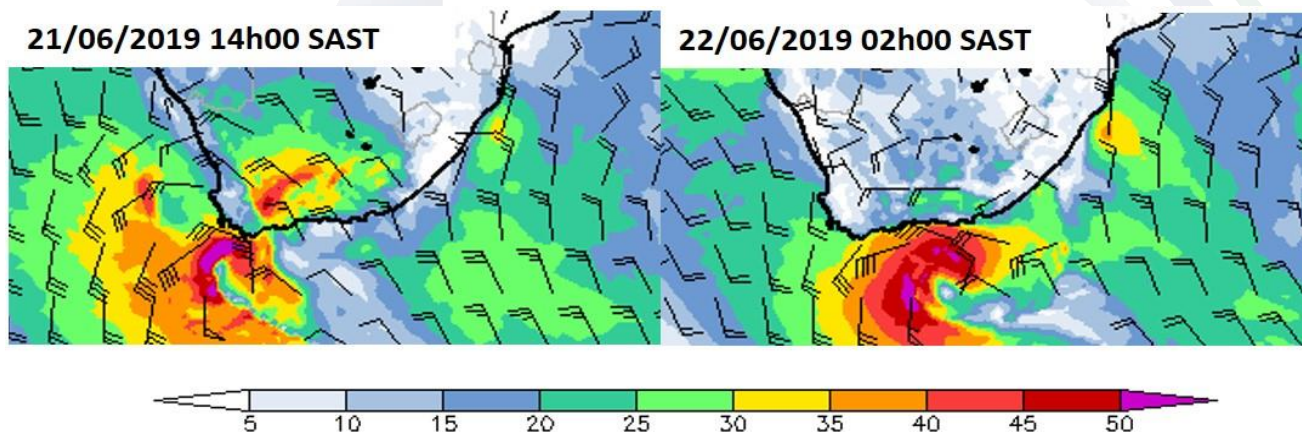


Figure 1: Projected wind speeds (in knots) over the Western Cape Interior and coastal regions for Friday afternoon as well as Saturday early morning.

Showers are expected to set in over the Western Cape Province during the midday period on Friday, spreading inland and eastward over most of the province during the afternoon and evening. It is

**Certified for  
Excellence**

**Board Members:** Ms Nana Magomola (Chairperson), Adv Derick Block, Dr Phillip Dexter (Deputy Chairperson), Mr David Lefutso, Mr Jerry Lengoasa (CEO), Dr Mphekgo Maila, Ms Kelebogile Moroka-Mosia, Ms Sally Mudly-Padayachie, Dr Tsakani Ngomane (DEA Rep), Mr Itani Phaduli, Ms Feziwe Renqe.  
**Acting Company Secretary:** Ms Thandi Zide

anticipated that the majority of the rain will fall over the western parts of the province where 20 - 30 mm is expected on Friday (Figure 2), however rainfall in mountainous areas could peak as high as 40 - 50 mm.

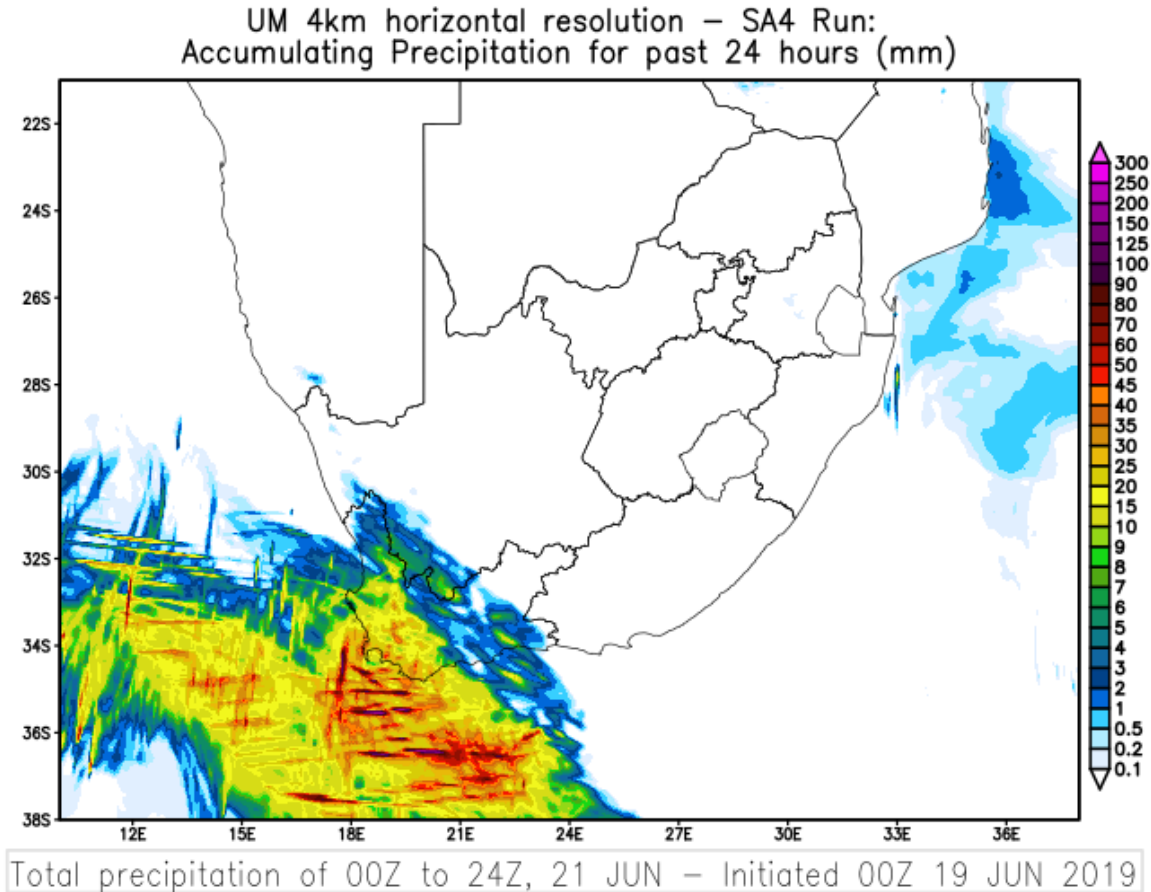


Figure 2: 24-hour accumulated rainfall prediction for Friday, 21<sup>st</sup> of June 2019.

Periods of heavy downpours may occur, which could lead to localised flooding. Informal settlements on the Cape Flats and the Overberg District are likely to be amongst the areas most vulnerable to flooding. Snowfalls are also likely over the southern mountains of the Western Cape on Friday night to Saturday morning.

High seas (exceeding 6 m) are expected to reach the south-western coastline of the Western Cape by Friday evening, spreading eastwards and reaching the southern coast of the Eastern Cape, as far east as Port Elizabeth, by Saturday morning. Commercial and subsistence fishing communities along the aforementioned coastline (especially the squid industry) are *strongly urged* not to venture out to sea on

Friday evening, as sea (and wind) conditions are expected to deteriorate dramatically overnight into Saturday morning and afternoon, therefore posing a significant risk to life.

On Saturday rain and showers will persist along the south coast and adjacent interior of the Western Cape, spreading to the Eastern Cape by the evening. The public can also expect cold to very cold temperatures to set in over the south western parts (including the Western Cape, Northern Cape, northern and south western interior of the Eastern Cape and south western Free State as per Figure 3) on Saturday. As the cold front shifts to the northeastern part of South Africa on Sunday, showers can be expected along the southeastern and eastern coastline, together with cold to very cold conditions over a large part of the interior of the country, where heavy frost can be expected Sunday night.

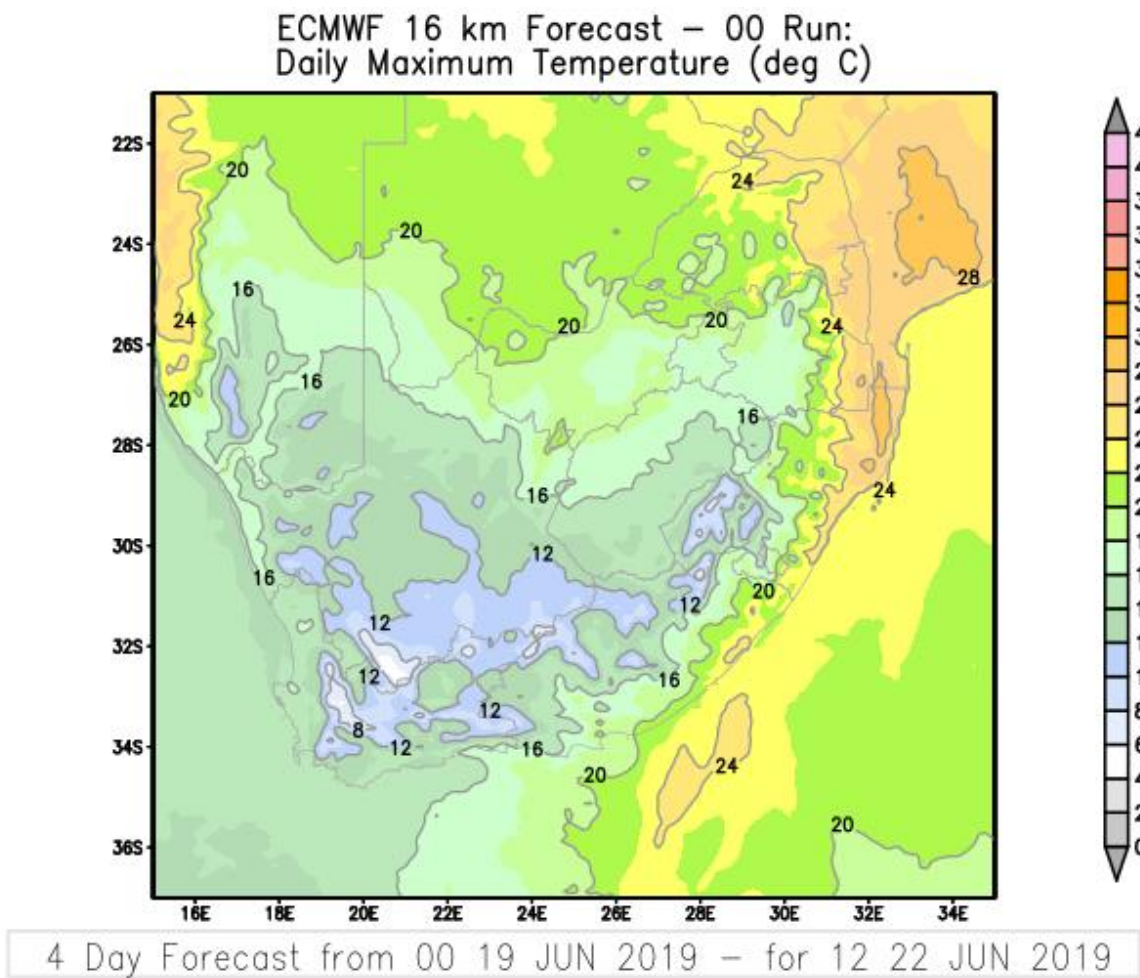


Figure 3: Maximum temperatures predicted for Saturday, 22<sup>nd</sup> of June 2019.

The public should take heed of the following watches issued by the South African Weather Service:

1. Heavy rain is expected over Cape Winelands, Overberg and Cape Metropole of the Western Cape on Friday.
2. Localised urban flooding is expected over Cape Winelands, Overberg and Cape Metropole of the Western Cape on Friday.
3. Strong to gale force winds are expected over the Central Karoo District, Breede River Valley and along the coastal regions between Cape Point and Plettenberg Bay on Friday, spreading to Port Alfred and the adjacent interior on Saturday.
4. High seas with wave heights in excess of 6 m is expected between Cape Point and Cape Agulhas on Friday evening, spreading towards Port Elizabeth on Saturday morning.

In addition, there is also an advisory for very cold conditions (daytime temperatures less than 10 °C) over the southern Namaqua district, Northern Cape as well as the Cape Winelands and Central Karoo regions of the Western Cape on Saturday.

Compiled by: Edward Engelbrecht and Thabisile Ntleko

Edited by: Jan H. Vermeulen and Kevin Rae

For technical and weather enquiries:

National Forecasting Centre; Tel: 012 367 6041

Media enquiries: Ms. Hannelee Doubell: Manager, External Communications; Tel: (012) 367 6104; Cell: 072 222 6305; E-mail: hannelee.doubell@weathersa.co.za

Website: [www.weathersa.co.za](http://www.weathersa.co.za); Twitter: @SAWeatherServic; Facebook: South African Weather Service/ @WeatherServic

USSD: Dial \*120\*7297#; Weather-ready, Climate-smart

***Download our WEATHERSMART APP for smartphones for free from the APP store!***